

More Knowledge, Better Care

Nursing databases for an
efficient nursing practice





Nursing Becomes Visible and Measurable

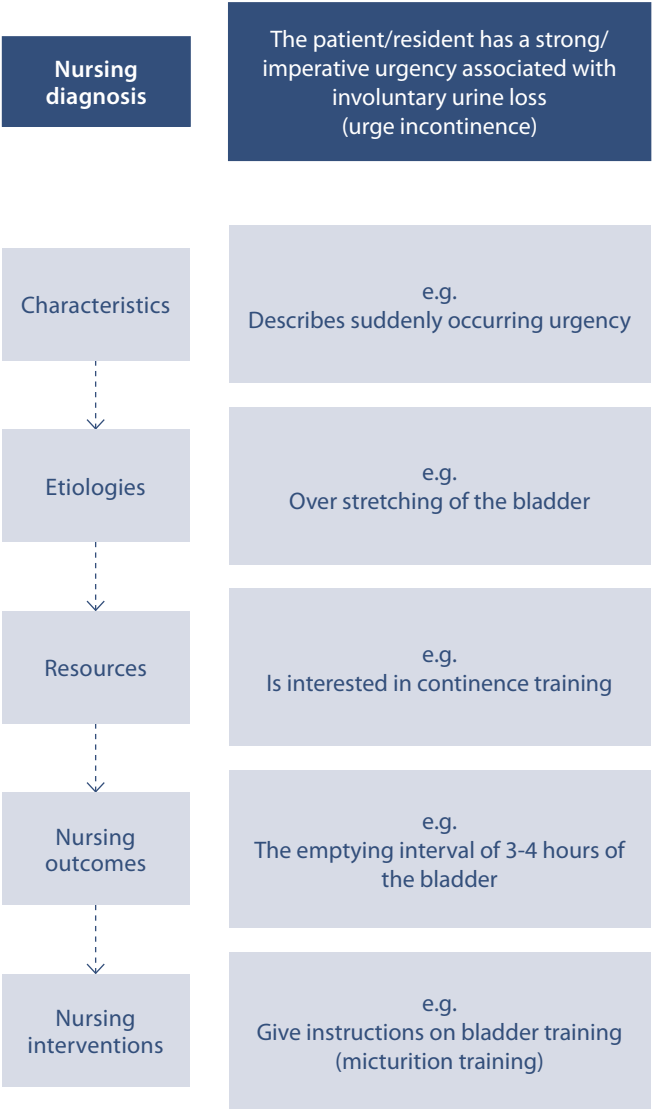
In today's increasingly networked and computerized workday optimizing workflows plays a significant role with regard to the ever scarcer time resources. Evidence of performed nursing quality under consideration of legal frameworks is essential. By use of nursing databases integrated into existing software environments nursing can be optimized. At the same time the workload for nurses decreases by using technically correct and professional formulation aids, so that there is more time left for the care of individuals. A desirable win-win situation for all involved.

A further remarkable advantage of this standardized way of working is that everyone involved in the nursing care process can access the identical level of information. Using nursing languages in the form of nursing databases relieves nursing staff considerably and provides a high quality, comprehensible and easy to use nursing documentation and data processing.

The Cardbox of Modernity

RECOM nursing databases facilitate the organization of data. By providing scientifically based nursing knowledge, nursing care is supported. Data are quickly and easily collected, edited, searched, categorized, as well as safely and reliably stored and thus documented.

Example ENP



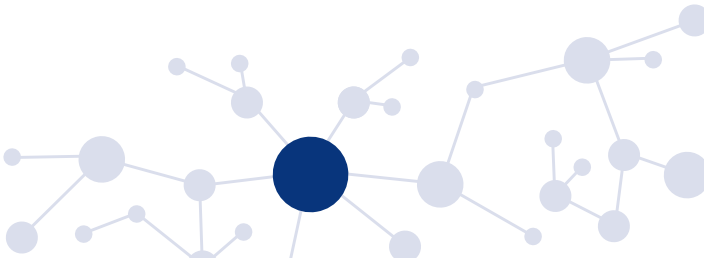
A High Degree of Accuracy

The ENP database illustrates the entire nursing care process and contains more than 550 detailed practice guidelines including nursing diagnoses, characteristics, etiologies, resources, outcomes and interventions. The standardized language provides nurses with a variety of possible ways to document nursing care.

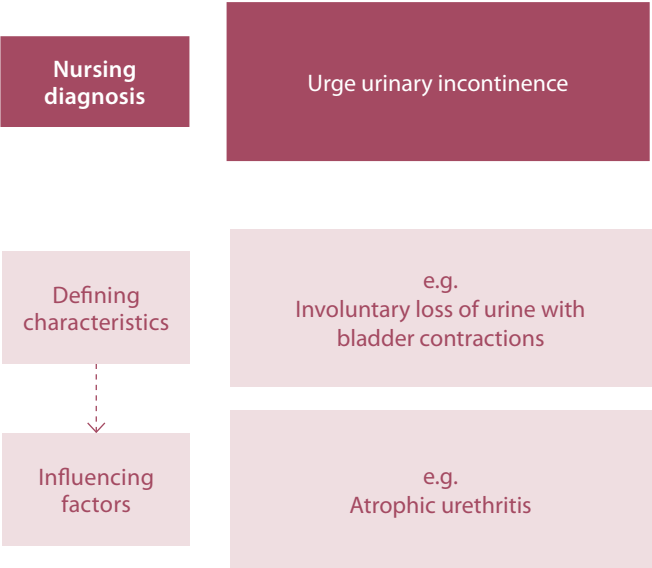
In four domains and 21 classes, the user has around 15,000 items available for the individual description of the nursing care process of a patient/resident. By this, the entire nursing care process can be illustrated step by step using ENP. The big advantage is in the very concrete, detailed formulation of the nursing diagnoses. ENP is especially suitable for electronic data analysis, e.g. for outcome measurements, to improve quality assurance, and to make nursing input measurable.

ENP is applied by more than 50,000 users in many EU countries in hospitals and aged care facilities as well as outpatient nursing services for more than 25 years, and it is not only scientifically based but also practice-approved.

The ENP database is available in German, English, French, Italian and Spanish.



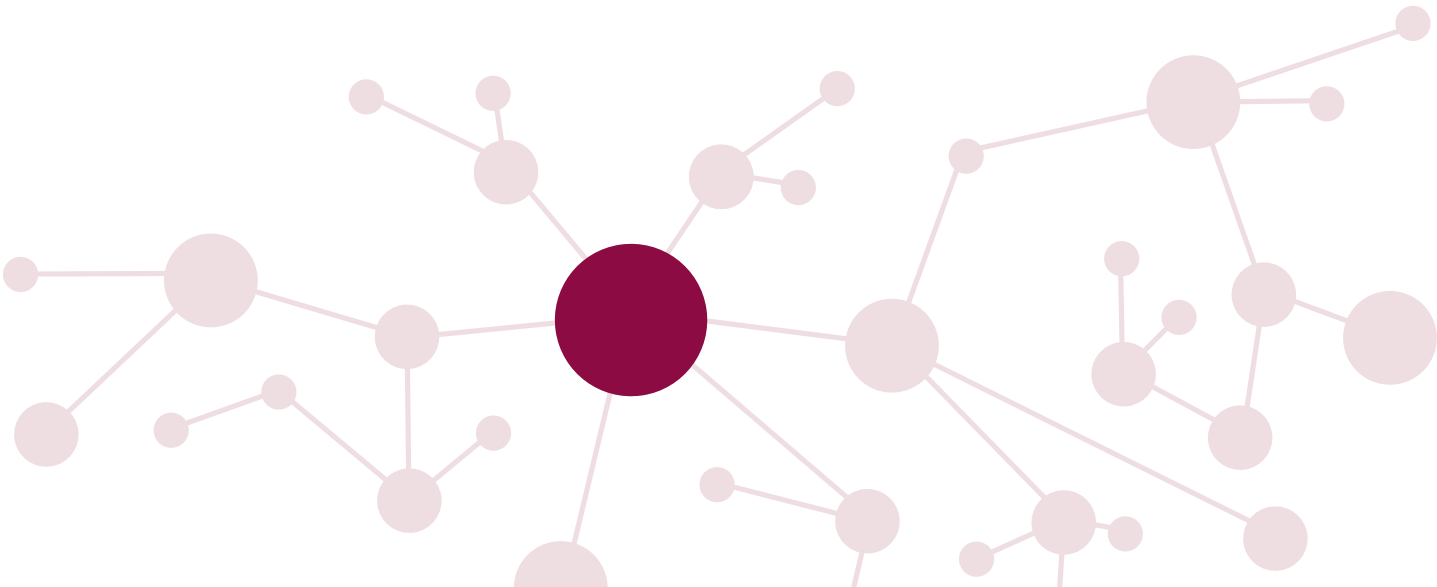
Example NANDA-I



A Tool for Nursing Diagnoses

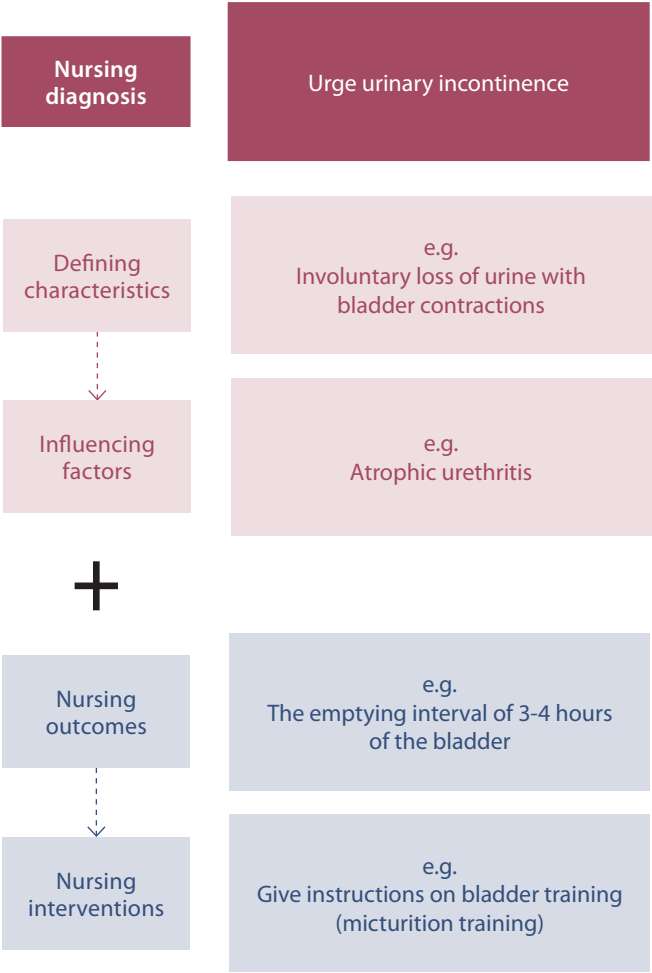
The structure of the NANDA International database illustrates the usual NANDA-I structure of more than 240 nursing diagnoses sorted alphabetically by nursing concepts into domains and classes including definitions and defining characteristics, influencing factors or risk factors.

Also within this classification nursing diagnoses are key to professional care. They are an effective tool to fulfill needs of the patients and to ensure patient safety. Especially in the age of electronic patient records standardized nursing diagnoses, such as the classification of NANDA International, offer the opportunity to collect high-quality nursing data for cost-benefit ratios and clinical audits.



Example NANDA-I PLUS

The usual NANDA-I structure...



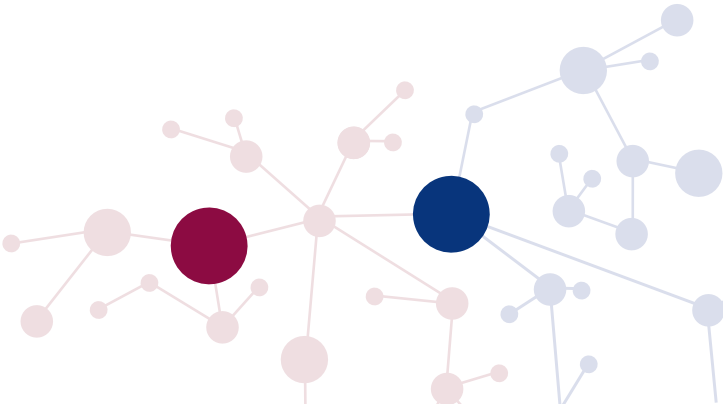
... are linked with the nursing outcomes and interventions from the respective ENP practice guideline

A Meaningful Alliance

What can you do, if you want to work with NANDA-I, but want to complete the nursing care process and its documentation by nursing outcomes and interventions?

Use “the Plus”

RECOM provides a helpful connection of both databases (NANDA-I and ENP). For this purpose, the existing NANDA-I structure is added by nursing outcomes and interventions of ENP to create a completed nursing care process based on NANDA-I nursing diagnoses. Thanks to this intelligent connection outcomes and interventions from the ENP practice guidelines are listed together with the respective NANDA-I nursing diagnoses in the database NANDA-I PLUS.





Facts and Figures

- More than 140 institutions already work with the nursing databases of RECOM, for example in Germany, Austria, Switzerland, and Luxembourg
- Transfer of the requested database is available in CSV or MS SQL format
- The nursing databases are integrated into the existing software environment of hospitals or elderly homes to be available for nursing staff at all times
- The RECOM nursing databases, for example, have been successfully implemented into the software systems of the vendors NEXUS, Agfa GWI, Swing, Syseca, Polypoint, root-service ag and Systema
- Updates of the NANDA-I database are provided every three years, in line with the German NANDA-I book publication of RECOM
- Updates of the ENP database are performed once a year ensuring up-to-date scientific knowledge in the respective institutions
- For questions and problems, RECOM offers comprehensive support by system experts



Your Advantages

- Current nursing knowledge is available at all times and supports nurses in their daily work
- The nursing databases ENP and NANDA-I PLUS provide a framework for the complete nursing care process, starting from nursing diagnostics, adequate selection of outcomes and interventions to the evaluation of the performed nursing services and the standardized illustration within the documentation
- A standardized language supports clarity of communication among nurses
- The illustration of the contribution of nursing services to the care process provides performance transparency to payers
- Generated nursing data promote patient safety and nursing quality
- The nursing databases enable to collect patient outcomes and provide data for case cost calculations
- The creation of detailed nursing care plans supports the educational process in nursing
- Through the continuous, systematic further development of ENP and NANDA-I, there is a smooth transfer of current nursing knowledge into practice
- Nursing databases support users in decision-making in their daily nursing work



Your Digital Partner

RECOM is a competent partner in matters of digital workload reduction in healthcare thanks to the various application possibilities of their own software products:

- RECOM-GRIPS: the digital, cross-sectoral and interdisciplinary patient and resident record
- ENP, NANDA, and NANDA-I PLUS: the databases for high-quality nursing
- IDEA: the instrument for the structured anamnesis
- PKMS-CheckDoku: the planning and documentation software for highly complex patients
- ENP Trainer: the professional training software for planning in nursing and elderly care

To get a first impression of working with the software and database solutions of RECOM there is the possibility of using the "ENP Trainer" for the creation of an exemplary nursing care plan. The ENP Trainer of RECOM is a training software which is used to assist in nursing education and to illustrate the user interface of a possible digital way of working.

Download now for free under:
www.recom.eu/get-enp

Knowledge for Healthcare

For more than 30 years the company RECOM is the contact for high quality, innovative products and services in healthcare. Our goal is to facilitate the daily work of all actors in healthcare as a professional and competent partner. Foundation for this is the sound scientific research work of our company.

Our fields of action are in publishing as well as in the development and implementation of intelligent knowledge management systems. The focus of daily work are innovative concepts and ideas for the staff in healthcare institutions. Since January 2015, RECOM has been cooperating with Thieme Group.

Learn more under **www.recom.eu**

RECOM GmbH
Gartenstrasse 9
34125 Kassel
Germany

www.recom.eu
info@recom.eu
www.recom-shop.eu

Phone +49 (0)561/870897-0
Fax +49 (0)561/870897-18

